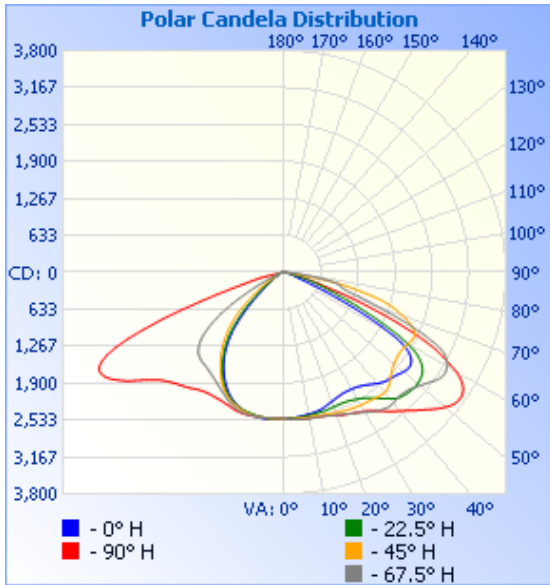


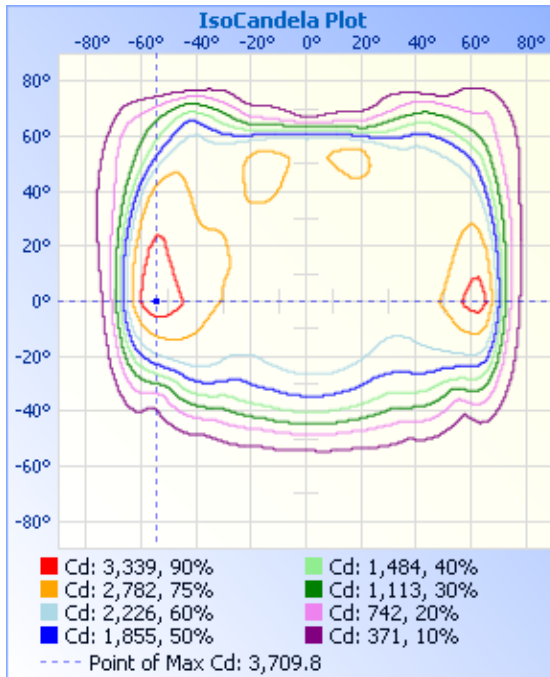
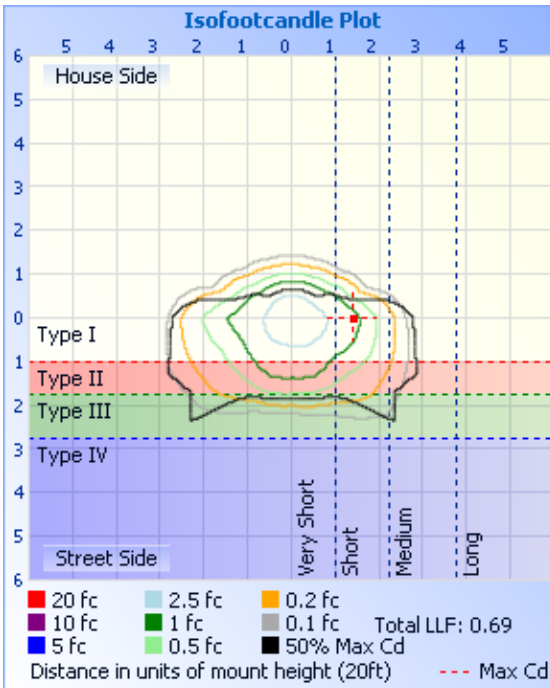
**Photometric Data**



**Illuminance at a Distance**

Distance (ft)	Center Beam fc	Beam Width
17.0ft	8.70 fc	26.3 ft 86.3 ft
34.0ft	2.17 fc	52.6 ft 172.5 ft
51.0ft	0.97 fc	79.0 ft 258.8 ft
68.0ft	0.54 fc	105.3 ft 345.0 ft
85.0ft	0.35 fc	131.6 ft 431.3 ft
102.0ft	0.24 fc	157.9 ft 517.5 ft

Vert. Spread: 75.5°  
 Horiz. Spread: 137.0°



Laboratory: Standard-Tech Co. Ltd Testing Center  
 NVLAP CODE: 201011-0

Report Format Number STD/QR4909-A/2

Address: Standard-Tech Building, No.6 Guanhong Road, Guangzhou Science City, Guangzhou 510663, China

Tel: 8620-3229 0320 Fax: 8620-32290422 <http://www.standard-tech.com>